



# 2D Bluetooth Wireless Barcode Scanner

## HW-3380 Series Models

### FEATURES & BENEFITS

- Wired, wireless, bluetooth, cradle can be optional
- 2D CMOS sensor decode 1D/2D on paper/screen
- Manual, Auto-sensing, Continuous mode
- Instant upload, inventory (offline mode)
- Bluetooth(30M), 2.4GHz RF(80M) communication
- 2200mAH battery 16MB memory store
- Display functions and remaining battery



### Communication



HW-3380→ 2.4GHz wireless

HW-3380B→2.4GHz+Bluetooth

HW-3381→wired



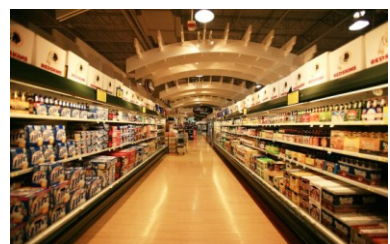
### Application



Logistics



Warehouse



Supermarket

# Technical Specification

## HW-3380B Parameters

Reading performance	Image Sensor	CMOS 30fps
	Resolution	300 thousand 640*480pixels
	Decoding capacity	Support paper and screen barcodes
		2D: QR ,PDF417,Data Matrix Aztec Maxi code etc.
		1D: UPC-A, UPC-E, EAN-8, EAN-13, Code 128, Code 39, Code 93, Code 11, Interleaved 2of 5, industrial 2 of 5, Matrix 2 of 5, Standard 2 of 5, Coda bar, MSI Plessey, GS1, etc. all normal 1D
	Precision	5mil
	Light Source	617nm Visible red LED, white LED
	Scan Angle	Rotation360° ,tilt±60° ,skew±60°
	Min Contrast	30%
	Scanning Speed	300 times/s
Mechanical and electrical	Typical DOF	60-100mm(4mil code39) 50-250mm(13mil EAN13)
		40-300mm(20mil QR) 40-280mm(10mil PDF417)
	Performance may be impacted by bar code quality and environmental conditions	
	Interface	USB/USB COM or RS232 or Bluetooth+2.4GHz RF wireless
	Bluetooth Mode	HID SPP BLE
	Working Voltage	DC 5V
	Current	180mA(working) 10mA(standby)
	Battery	2200mAH lithium battery, working 3-7days,charge time 4-5H
	Memory Size	16MB
	Dimensions	180*90*65mm(scanner)
Environment Request	Weight	150g(without cable)
	Cable Length	1.5M
	Indication	Buzzer & LED
	Working Tem	-20~60℃
	Storage Tem	-40~85℃
	Humidity	5%-95%(Non-condensing)
	Light Immunity	0~100,000Lux
	Drop Test	2M
	IP protection	IP42
	ESD protection	Functional after 15KV discharges